

SEVEN ROOTS

OF THE CENTENARY

LANDSCAPE OF WINE



Ruta del Vino
Riqa Alta



Old town Haro

If you are reading this guide, you're probably in one of the towns of the Rioja Alta Wine Route. Read on to learn more of the history surrounding the world of wine, and the social, monumental, ethnographic and economic changes brought about by this undeniable protagonist.

In this land, wine is legend and reality. It's no wonder that it homes the greatest number of centennial wineries in the world. Large, small, monumental, artisanal... as many wineries as generations have devoted their life to cultivating and making the wine that gives the land its name. The historical winery quarters, such as the one near the Haro train station, wineries built underground and ancient rock winepresses, present in many of the towns, are proof of this.

In the towns on the route, you'll discover the unique history surrounding the world of wine and their unique features.

Although wine is the driving force of the routes, visitors will also find other interesting attractions detailed in this guide.

The Way of St James, which traverses part of this land, is one of example, whe-

re pilgrims witness and experience the remnants of this wonderful ancient past.

And perhaps, due to the nature of this crossroads and melting pot of cultures, people in these lands are known for their hospitality and generosity with visitors that have come to learn more about their culture and customs.

Another interesting path to travel is the Romanesque Route, on the western-most area, which harbours epic monuments of a great cultural and heritage value. Romanesque wasn't the only style that left its mark in this area, the legacy of Baroque, Gothic, Plateresque and Renaissance styles lives on in civil and ecclesiastical buildings in these towns. Of the six monasteries found on this itinerary, five are still in use.

All in all, visitors will feel their souls nourished with the vast cultural and artistic heritage; their bodies with the magnificent food and lodging establishments on the way; and their spirit through the relationships and conversation with the locals. We invite you to step into this land and enjoy an unforgettable experience.

1

THE ROUTE OF WINE

HARO
 OLLAURI
 BRIONES
 SAN ASENSIO
 *RODEZNO (Annexed)

35.3 km 46 minutes

Haro - Ollauri
4.9 km 9 minutes

Ollauri - Briones
6.4 km 9 minutes

Briones - San Asensio
8.5 km 11 minutes

San Asensio - Haro
15.5 km 17 minutes

*Ollauri - Rodezno
3 Km 5 minutes



Ancient necropolis at the San Asensio vineyards



Vivanco Museum of Wine Culture, Briones



Our first itinerary is inspired by wine, the star of this guide. Although it's present in all the towns on this route, we've drawn a simple and varied itinerary to these five towns.

The starting point of your visit doesn't matter. If starting at Haro, stop by Barrio de La Estación (Railway Quarter), where you'll find the most important group of centennial wineries in the world. The quarter received its name for its proximity to the railway station, which facilitated the international expansion of the product. Nowadays, these wineries produce renowned wines of excellent quality. It is possible to tour these carefully restored facilities.

From here, move on to the rest of the towns. In addition to their own unique features, you'll find traditional wine cellars and historic wineries, where wine was

produced and stored. Some are even being restored for touristic purposes.

We will then visit four unique municipalities, rich in both their underground heritage and surface beauty. Ollauri, Briones, San Asensio, and Rodezno boast a long-standing winemaking tradition, as evidenced by their historic underground cellars and wineries where wine was once produced and stored. Briones is home to one of the most spectacular wine museums in the world, the Vivanco Museum; in Ollauri, you'll find the oldest winery in La Rioja; San Asensio treasures over 250 underground wineries interconnected by labyrinthine passageways; and Rodezno is a privileged enclave of nature and wine, with a stunning wine district overlooking the Sierra Cantabria, where you can enjoy breathtaking sunsets.

Wine, driving force of this route, has a special and unique meaning here.



Wine Fight, Haro

HARO / 11,305 people

- Feb. - Mar. - Wine Carnival
- 24 June - Festivities of Saint John
- 29 June - Wine Fight
- 1st Sun. Sept. - Fest. Virgen de La Vega

- Barrio de la Estación
- Basílica Virgen de la Vega (10th c.)
- Church of Saint Thomas the Apostle (17th c.)
- Chapel San Felices de Bilibio
- Bendaña Palace (16th c.)

OLLAURI / 286 people

- Feb. - Month of Wine
- 2nd week Sept. - Wine Harvest Market
- 10 Dec. - Fest. Saint Eulalia

- Palace of the Marquises of Terán (17th c.)
- Old winery wine cellars

BRIONES / 766 people

- June - Medieval Festival
- 3rd Sun. Sept. - Fest. Vera Cruz

- Church Virgen de la Asunción (16th c.)
- Ethnographic Museum - La Casa Encantada
- Vivanco Museum of Wine Culture

SAN ASENSIO / 1,124 people

- April - Pilgrimage to Davalillo
- 15 May - Fest. Saint Isidore the Farmer
- 25 July - Clarete Wine Fight

- Castle & Chapel of Davalillo
- Shrine of Saint Mary of La Estrella (15th c.)

RODEZNO / 275 people

- 20 Jan. - Fest. Saint Sebastian
- 15 May - Fest. Saint Isidore the Farmer
- 10 July - Fest. Saint Christopher
- Saturday after the Assumption Day - Virgen de Olartia Pilgrimage

- Barrio de los Calados
- Church Virgen de la Asunción (16th c.)
- Chapel Virgen de Olartia

2

LA RUTA DE LOS SILLARES

HARO
BRIÑAS
SAN VICENTE DE LA SONSIERRA
ÁBALOS

34 km. 42 minutos

Haro - Briñas
4,8 km. 8 minutos

Briñas - San Vicente de la Sonsierra
8,5 km. 11 minutos

San Vicente de la Sonsierra - Ábalos
5,9 km. 7 minutos

Ábalos - Haro
14,8 km. 16 minutos



Hotel Eurostars Los Agustinos, en Haro

El territorio de La Rioja Alta cuenta con numerosas casas solariegas que serán las protagonistas de nuestro segundo paseo. Están construidas con piedras de sillería y son originarias de los siglos XVI, XVII y, en menor medida, del XVIII.

Las familias nobles de los siglos XVI y XVII mostraban su rango social y distinción a través de las casonas solariegas

La razón de ser de estos singulares edificios fue la de servir de pequeños palacios a familias nobles de la época. Con ellas mostraban su rango y distinción y, hoy, son sede de viviendas, estableci-

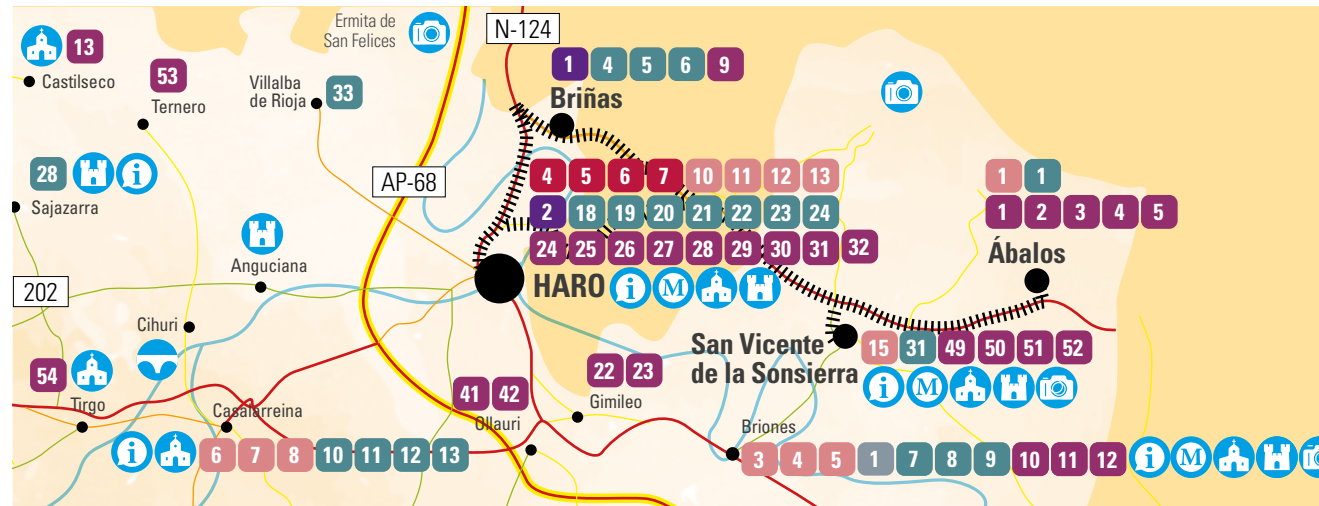
mientos públicos, así como de hoteles y restaurantes que muestran el esplendor de antaño.

Buena parte de los municipios de La Ruta del Vino Rioja Alta, albergan estos majestuosos edificios. En Ábalos, por ejemplo, destacan el palacio del Virrey de Ábalos y la casona del Marqués de Legarda. Briñas, también es sede de numerosas casonas bien conservadas con la bella singularidad de sentir el río Ebro en el interior de sus cimientos. Finalmente, el municipio de San Vicente de la Sonsierra atesora numerosas casonas de este tipo además de un extraordinario puente medieval, construido en el S. XIII y rehabilitado en el S. XVI.



Castillo de San Vicente de la Sonsierra

Las calles flanqueadas por los edificios de sillería trasladan al visitante a otra época



HARO
See page 5

BRIÑAS
202 people

Aug. - Fest. Lady of the Assumption
Sep. - Fest. St Cornelius & St Cyprian

- Chapel El Humilladero (17th c.)
- El Crucero (17th c.)
- Church Virgen de la Asunción (16th c.)
- Winery Quarter

SAN VICENTE DE LA SONSIERRA
1,014 people

Jan. - Fest. St Vincent Martyr
Easter Week - Los Picaos penance
15 May - Fest. Saint Isidore the Farmer
Sept. - Fest. Virgin of Los Remedios

- Chapel of the Vera Cruz
- Medieval Bridge (13th c.)
- Castle - Fortress (12th c.)
- Hermitage Sta. María de La Piscina (12th c.)
- Church Sta. María La Mayor (16th c.)
- Wineries and necropolis

ÁBALOS
249 people

Aug. - Fest. St Stephen Protomartyr
Sept. - Fest. Virgin of La Rosa
Sept. - Winery Open House

- Marquis of Legarda Palace
- Ancient winepresses
- Church of St Stephen Protomartyr (16th c.)



Ábalos cuenta con numerosas construcciones de sillería

3

SMALL MONUMENTAL PARADISE

HARO
CASALARREINA
TIRGO
CUZCURRITA DE RÍO TIRÓN
SAJAZARRA

30.6 km 46 minutes

Haro - Casalarreina
7.1 km 11 minutes

Casalarreina - Tirgo
3.7 km 5 minutes

Tirgo - Cuzcurrita de Río Tirón
1.3 km 4 minutes

Cuzcurrita de Río Tirón - Sajazarra
6.6 km 10 minutes

Sajazarra - Haro
11.9 km 16 minutes



Sajazarra Castle

This itinerary wanders around towns to showcase the magnificent variety and styles found in the different historical buildings.

Romanesque chapels and bridges, 14th and 15th century ecclesiastic buildings, ramparts and fortresses, and noble manors owned by the wealthy families of old ages are a large part of the treasures that visitors will find in these five towns.

town also is home to the church of San Martin, the Pobes Palace and the Palace of the Constables of Castile. Two important 10th and 12th century buildings in Tirgo are the Monastery of Santa María and the Romanesque Church of El Salvador.

Stroll down the narrow streets of Cuzcurrita de Río Tirón, flanked by ashlar buildings, and observe the strategic



Monastery of Nuestra Señora de La Piedad, Casalarreina

Strolling around these towns is enjoying the magnificent variety and styles of its buildings.

In Casalarreina, the Dominican Monastery of La Piedad is worth visiting. With its Isabelline Gothic and Plateresque styles, it was declared 'Conjunto Histórico' (a conservation area) in 1975. This

orientation of its buildings. Then, visit the majestic Velasco Castle.

Finish at Sajazarra where, after walking around the quaint and beautiful old town, you can see its impressive rampart (13th c.), the medieval arch (the only one remaining of the initial four), and a unique fully-restored 15th century castle.



Teatrísso Hotel, Cuzcurrita de Río Tirón

HARO
See page 5

CASALARREINA
1,145 people

June - Wine Fight (Sanjuanada)
Aug. - Ancient Music Festival
Sep. - Gracia Festival
Nov. - Fest. Saint Martin

- Monastery Sta. M^a de La Piedad (16th c.)
- Palace of the Constables of Castile (16th c.)
- Pobes Palace (18th c.)

TIRGO
186 people

Aug. - Fest. El Salvador
Aug. - Fest. Virgin & St Roch

- Monastery Sta. M^a of Tirgo (10th c.)
- Church El Salvador (12th c.)
- Ashlar houses and shields of the 17th and 18th c.

CUZCURRITA DE RÍO TIRÓN
488 people

Pentecost Day - Fest. Virgin of Tironcillo
May - Fest. of Tironcillo
Sep. - Fest. St Michael the Archangel

- Velasco Castle (15th c.)
- Church of San Miguel (18th c.)
- Chapel Virgen de Tironcillo (18th c.)
- Chapel of Sorejana (13th c.)

SAJAZARRA
130 people

April - Fest. Saint Marcus
Aug. - Fest. Virgen de Cillas

- Castle-Palace (15th c.)
- Rampart ruins (13th c.)
- Church Virgen de la Asunción (12th c.)

4

BETWEEN VINEYARDS AND HISTORY

CENICERO
URUÑUELA
HUÉRCANOS
NAVARRETE

37.5 km 41 minutes

Cenicero - Uruñuela

7.9 km 9 minutes

Uruñuela - Huércanos

2.2 km 4 minutes

Huércanos - Navarrete

14.7 km 13 minutes

Navarrete - Cenicerero

12.7 km 15 minutes



Romanesque cemetery arch in Navarrete



Vineyards irrigated by the Ebro river in Cenicerero

Cenicero has one of the longest wine traditions in the area. In fact, a large part of its economy is based on grape cultivating, wine making and its surrounding industry. Centennial wineries and traditional wine cellars are scattered around the town, and coexist with Celt, Iberian and Roman archaeological sites, that prove its long history.

Following this fourth route, we reach two nearby towns nestled in a dense landscape of vineyards, whose main representatives are two renowned winemaking cooperatives. In terms of heritage, Uruñuela boasts the Church of San Servando and San Germán, where visitors can admire four beautiful Rococo altarpieces crafted from wood. Meanwhile, in Huércanos, the Church of San Pedro and various manor houses are well worth a visit.

Then, the itinerary will take you to Navarrete, the quintessential pottery town, the only one remaining in La Rioja. Tradition and connections to pottery are displayed in the existing factories (most of them, from the 1980s), as well as in art pieces, such as the sculpture 'Homenaje al alfarero' (A tribute to potters) by the Riojan artist Óscar Cenzano. The town also hosts the annual pottery fair NACE.

In addition to this professional and economic speciality that permeates the town, Navarrete has incredible heritage buildings from the 16th, 17th and 18th centuries with prominent heraldic and iron fittings. Worth mentioning is the cemetery entrance, in Late Romanesque style, one of the few left in La Rioja.

All the towns have heritage jewels that are worth seeing.



Navarrete is known for its pottery tradition

CENICERO

2,036 people



Mar. - Fest. St Joseph
Easter Week - Burning of Judas
May - Fest. Saint Isidore the Farmer
Oct. - Fest. St Daria



- Church of San Martín (16th c.)
- El Crucero (17th c.)
- Chapel Virgen del Valle (18th c.)

URUÑUELA

988 people



Feb. - Fest. San Ignacio y Las Candelas
May - Fest. Saint Isidore the Farmer
Aug. - Fest. Virgen del Patrocinio



- Church San Servando & San Germán (16th c.)
- Chapel Virgen del Patrocinio (18th c.)

HUÉRCANOS

818 people



Feb. - Fest. St Matthias
July - Vicoca Fair/Fest. St Pantaleon
Oct. - Fest. Virgen del Pilar



- Church of San Pedro (16th c.)
- Territorial column (15th c.)
- Church of San Pantaleón (16th c.)

NAVARRETE

3,040 people



July - NACE (National Pottery & Ceramics Fair)
Aug. - Fest. of Assumption & St Roch
July - Fest. of Las Santitas



- Church Sta. M^o de La Asunción (16th c.)
- Romanesque cemetery arch (12th c.)
- Ruins of the Hospital San Juan de Acre (12th c.)
- Ignatian Way

5

WINE AND CUISINE ON THE WAY OF ST JAMES

LOGROÑO
 NAVARRETE
 *FUENMAYOR (Annexed)
 NÁJERA

59 km 55 minutes

Logroño - Navarrete
 13.9 km 16 minutes

*Navarrete - Fuenmayor
 5.1 Km 8 minutes

Navarrete - Nájera
 17.2 km 15 minutes

Nájera - Logroño
 27.9 km 24 minutes



People socialising on calle Laurel, Logroño

The bustling calle Laurel heralds a route full of wineries and wonderful food.

If the Way of Saint James didn't already cross La Rioja, it would need to be re-routed. The hospitality of the people in this area is an example for visitors and pilgrims alike.

When travellers arrive to Logroño from Navarra, they cross the stone bridge over the Ebro river. There, they catch a glimpse of the city's skyline, dominated by the must-sees: the church of Santa María de Palacio, the co-cathedral of Santa María de la Redonda, and the church of Santiago. Making a culinary stop at the most famous *pincho* and *tapas* streets (calle Laurel, calle San Juan and its vicinities, as well as some of the wineries in the capital of La Rioja) is mandatory.

The next stop is Nájera, commonly known as the 'furniture capital', due to its manufacturing and furniture sale businesses. This town and its region also have agriculturally-based activities, especially vineyard-oriented. Regarding patrimonial buildings, the Monastery of Santa María La Real is worth a visit. Built by king García Sánchez III in the 10th century, it became an episcopal see and a royal mausoleum.



Pilgrims rest in Navarrete

From there, continue your path by following the steps of the thousands of pilgrims that pass through here each year. First, visit the pottery town of Navarrete (route 4), one of the milestones in the Way of St James and the Ignatian Way. Then, continue on to Fuenmayor, an important wine-making town with vast vineyards, fundamental to their economy, and wineries—not to be missed.



A pilgrim crosses the stone bridge into Logroño

LOGROÑO

151,113 people



Jan. - 'Actual' Festival
 June - Fest. St Barnabas
 Sep. - Fest. St Matthew 'Festival of the Grape Harvest'



- Calle Laurel, calle San Juan
- Co-cathedral of Sta. M^o de la Redonda (16th c.)
- Church of San Bartolomé (12th c.)
- Fortification of Revellín (15th c.)
- Plaza de Abastos
- Church Sta. M^o de Palacio (16th c.)

NAVARRETE

See page 11

NÁJERA

8,047 people



Jan. - Fest. Saint Anthony
 Easter Week - Furniture Fair
 April - Fest. Saint Prudentius
 June - Fest. Saint John & Saint Peter
 Sep. - Fest. San Juan Mártir & Santa María la Real
 Oct. - Fest. Saint Michael



- Historical quarter
- Museo Najerillense
- Church of Santa Cruz (17th c.)
- Monastery Sta. María La Real (11th c.)

FUENMAYOR

2,278 people



June - Fest. Saint John
 July - Craftsmanship & Wine Festivity
 Dec. - Fest. Los Marchos



- Church Sta. María (16th c.)
- Bridge of Christ (16th c.)
- House Navajas (16th c.)
- Chapel of Christ (17th c.)

6

THE ROUTE OF THE MONASTERIES

- NÁJERA
- BADARÁN
- SAN MILLÁN DE LA COGOLLA
- CAÑAS
- SAN ASENSIO
- *CASALARREINA (Annexed)

60 km 71 minutes

Nájera - Badarán
10 km 14 minutes

Badarán - San Millán de la Cogolla
7 km 10 minutes

San Millán de la Cogolla - Cañas
8.8 km 11 minutes

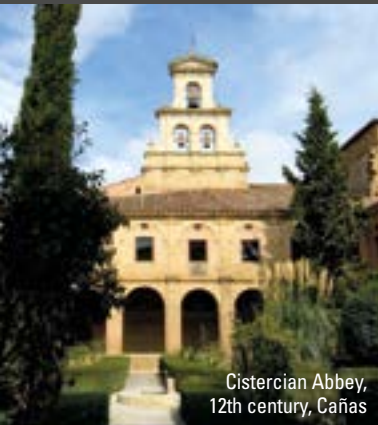
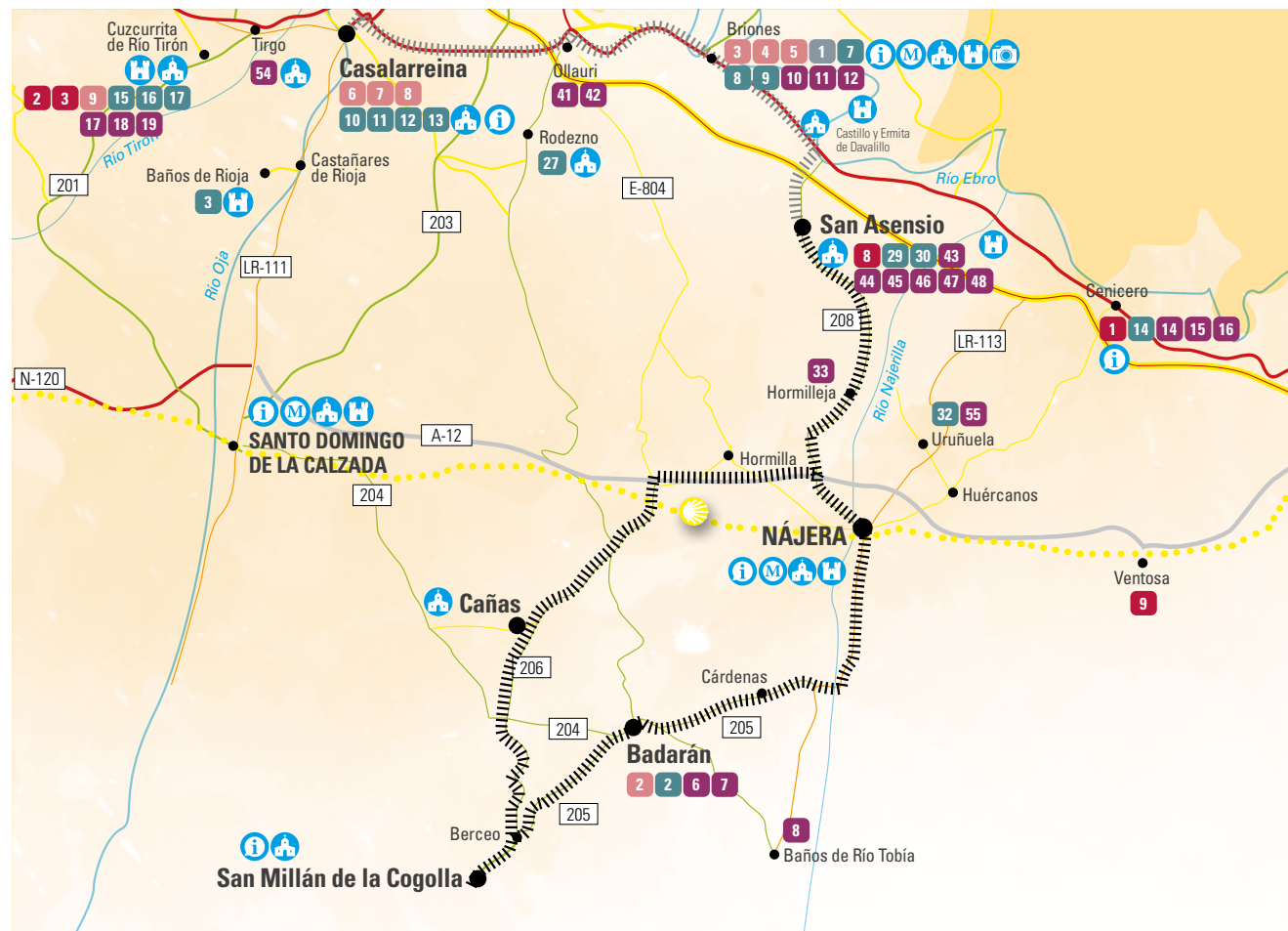
Cañas - San Asensio
22 km 22 minutes

San Asensio - Nájera
12 km 13 minutes

*San Asensio - Casalarreina
21 km 18 minutes



Yuso Monastery, birthplace of Castilian, San Millán de la Cogolla



Cistercian Abbey, 12th century, Cañas



Cloister of the Monastery of Santa María la Real, Nájera

Few valleys have the same patrimonial wealth as the valley of the Cárdenas river. The itinerary starts at the main town in the region, Nájera, where you can visit the Monastery of Santa María la Real. Built by king García Sánchez III and finished in 1052, it's a mixture of Baroque, Late Gothic and early Renaissance styles. Its royal mausoleum houses the twelve graves of two different dynasties (Abarcas and García Ramírez). The Cloister of the Knights is the burial site of many noblemen.

The Yuso and Suso Monasteries are World Heritage Sites and the birthplace of the Castilian language. The first words in this language were written there.

From here, cross the towns of Badarán and Berceo to reach San Millán de la Cogolla. Its twin monasteries Yuso and Suso were declared World Heritage Sites and birthplace of the first words in Castilian, written by the most famous

poet of the valley, Gonzalo de Berceo. Suso (upper) was built on the site where eremites, disciples of Saint Emilian, lived in the 6th century. Yuso (lower) was an addition to Suso in the 11th century, rebuilt during the 16, 17 and 18th centuries. They're a mix of styles, mainly Renaissance and Baroque.

Few valleys have the same patrimonial wealth and beauty as the valley of the Cárdenas river.

These impressive buildings hold great treasures, such as a library still furnished as at the end of the 17th century. The library and the archive are considered some of the best in Spain.

The itinerary ends at the Cistercian Abbey of Cañas, started in the 13th century. Its main entrance was finished in the 18th century. Some of the highlights of this abbey are the church, the great Renaissance reredos and the doorway to the chapter house.

NÁJERA
See page 13

BADARÁN
502 people

- Aug. - Fest. Virgin of Assumption & St Roch
- Aug. - Theatre Festival 'Badarán que hablar'
- Sep. - Gracia Festival
- Prehistoric & Roman settlements
- Church of La Expectación (17th c.)

SAN MILLÁN DE LA COGOLLA
222 people

- Pentecost - Pilgrimage to the Monastery of Valvanera
- July - Fest. Virgen del Carmen
- Sep. - Fest. La Traslación
- Nov. - Fest. Saint Emilian
- Monasteries of Yuso (11th c.) & Suso (6th c.)
- Chapel of Santa Potamia

CAÑAS
97 people

- May. - Fest. Saint Mary
- Sep. - Fest. of Giving Thanks
- Sep. - Pilgrimage to Sto. Domingo de Silos
- Dec. - Fest. Sto. Domingo de Silos
- Cistercian abbey (13th c.)

SAN ASENSIO
See page 5

CASALARREINA
See page 9

7

THE ROMANESQUE ROUTE

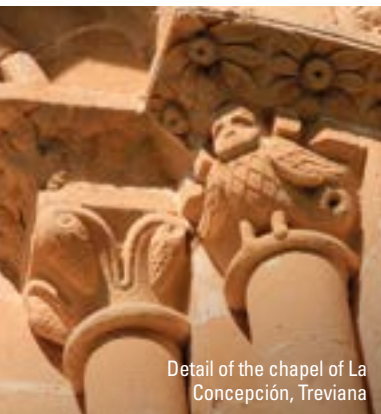
TIRGO
 CASTILSECO
 VILLASECA
 TREVIANA
 CUZCURRITA DE RÍO TIRÓN

35 km 36 minutes

- Tirgo - Castilseco**
8.9 km 8 minutes
- Castilseco - Villaseca**
2.8 km 4 minutes
- Villaseca - Treviana**
12.4 km 13 minutes
- Treviana - Tirgo**
11 km 11 minutes
- Tirgo - Cuzcurrita de Río Tirón**
1.3 Km 3 minutes



Church of San Román, Villaseca



Detail of the chapel of La Concepción, Treviana



Enjoy Treviana and its Romanesque Centre as the starting point of this itinerary and a place to gather more information. To get the most out of this region of the Rioja Alta Wine Route, visit the screenings, exhibits, stonework pieces and educational workshop spaces.

The pilgrimage to Santiago de Compostela allowed the Romanesque to spread rapidly.

With the silence that dominates the Romanesque style, head to the town of Castilseco, where you can visit the church of San Julián, a small temple with particularly beautiful nave and chancel, with a semi-circular apse.

From there, stop at Villaseca, home of the church of San Román, the best and most complete example of Romanesque from Santo Domingo de la Calzada. It's a beautiful temple in Riojan Romanesque style from the 12th century with a wonderful apse. Under the main square there is a necropolis with graves, which may indicate that the cemetery was located around a larger temple.

Continue on to Treviana to the chapel of La Concepción, a quaint unfinished Romanesque building that was recently restored. The ending point is Cuzcurrita de Río Tirón and its beautiful chapel of Sorejana, built in the 13th century and extended in the 16th century with three Gothic sections. In 1981 it was declared 'Bien de Interés Cultural' (Cultural Interest Asset).



Church of San Julián, Castilseco

TIRGO
 See page 9

CASTILSECO
 14 people

- Jan. - Fest. Saint Julian and Basilissa
- Church of San Julián (12th c.)
- Ancient chapel of San Martín

VILLASECA
 45 people

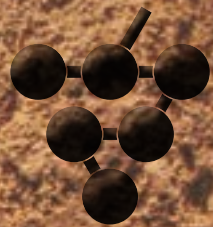
- Church of San Román (12th c.)
- Fortified entrance arch
- Chapel of Virgen de la Cuesta

TREVIANA
 168 people

- Apr. - Fest. St Mark. Pilgrimage to the chapel of Junquera
- Aug. - Gracia Festival
- Sep. - Virgen de la Junquera
- Chapel of San Pedro or La Concepción (12th c.)
- Romanesque centre

CUZCURRITA DE RÍO TIRÓN
 See page 9

ESTABLISHMENTS



Ruta del Vino
Rioja Alta

EXPERIENCIAS

BODEGA CALADO 1880 ¹
C/Travesía Centro, 1
(Cenicero)
Telf. 630 424 012
[www.facebook.com/
Bodega-Calado-1880](http://www.facebook.com/Bodega-Calado-1880)

GLOBOS ARCOIRIS ²
Carretera N-232. Km 459
(Cuzcurrita de Río Tirón)
Telf. 696 489 632
www.globosarcoiris.com

LA BODEGA DEL TESORO ³
C/Cuevas, 45
(Cuzcurrita del Río Tirón)
Telf. 607 214 989
www.labodegadeltesoro.com

GRAPE AVENTURA ⁴
Pol. Industrial Fuenteciega
C/ Acacias, 124 (Haro)
Telf. 681 000 042
www.grapeaventura.com

**LÁCTEOS MARTÍNEZ –
QUESO LOS CAMEROS** ⁵
Polígono Industrial Fuente Ciega.
Los Nogales, 55 (Haro)
Telf. 941 310 940
www.loscameros.es

OJA SPORT ⁶
Linares Rivas, 44 bajo (Haro)
Telf. 941 305 614 / 607 449 650
www.ojasport.com

RIOJA RENT A CAR ⁷
C/ Las Acacias, 80 (Haro)
Telf. 941 304 974
www.haromotor.com

RIOJA WINE TRIPS ⁸
C/Camino de la Manzanera, 1
(San Asensio)
Telf. 652 726 119
www.riojawinetrips.com

**EXPLOTACIONES APÍCOLAS
CAMPO MIEL** ⁹
C/San Roque nº 12 (Ventosa)
Telf. 606 120 088
www.campomiel.com

RESTAURANTS

1 VILLA DE ÁBALOS

Plaza Fermín Gurbindo, 2
(Ábalos)
Telf. 941 334 302 / 649 841 746
www.hotelvilladeabalos.com

2 CONDE DE BADARÁN

Ctra. San Millán, 1 (Badarán)
Telf. 941 367 055
www.condedebadaran.com

3 ALLEGAR

C/ Concepción, 37 (Briones)
Telf. 941 991 599
reservas@santamariabriones.com
www.santamariabriones.com

4 LOS CALAOS DE BRIONES

C/ San Juan, 13 (Briones)
Telf. 941 322 131
www.loscalaosdebriones.com

5 VIVANCO

Ctra. Nacional, 232 (Briones)
Telf. 941 322 323
www.vivancoculturadevino.es

6 ENTRERAÍLES

C/ Escuelas, 5 (Casalarreina)
Telf. 941 139 357
www.entrerailles.es

7 LA VIEJA BODEGA

Avenida de La Rioja, 15
(Casalarreina)
Telf. 941 324 254
www.viejabodega.es

8 LUMBRE

Travesía Jardines, 15
(Casalarreina)
Telf. 941 324 122
www.lumbrerestaurante.com

9 OTIUM RESTAURANTE

Ctra. LR-111 Km 36.
Natura Resorts (Casalarreina)
Telf. 941 565 000
www.natura-resorts.com

10 AKER

C/ Aguardienterías, s/n
(Cuzcurrita de Río Tirón)
Telf. 941 301 799 / 619 821 870
www.asadoraker.com

11 ARROPE

C/ Virgen de la Vega, 31 (Haro)
Telf. 941 304 025
www.restaurantearrope.com

12 BEETHOVEN

C/ Santo Tomás, 8 (Haro)
Telf. 652 112 641
www.beethovenharo.com

13 EL CLAUSTRO DE LOS AGUSTINOS

C/ San Agustín, 2 (Haro)
Telf. 941 311 308
www.eurostarslosagustinos.com

14 NUBLO

C/ Plaza San Martín, 6 (Haro)
Telf. 636 725 850
www.nublorestaurant.com

15 EL FIGÓN DEL DUQUE

Plaza Mayor (Plaza del Hundido)
(Navarrete)
Telf. 941 124 094
www.elfigondelduque.com

16 CASA TONI

C/ Zumalacárregui, 27
(San Vicente de la Sonsierra)
Telf. 941 334 001 / 696 949 292
www.casatoni.es

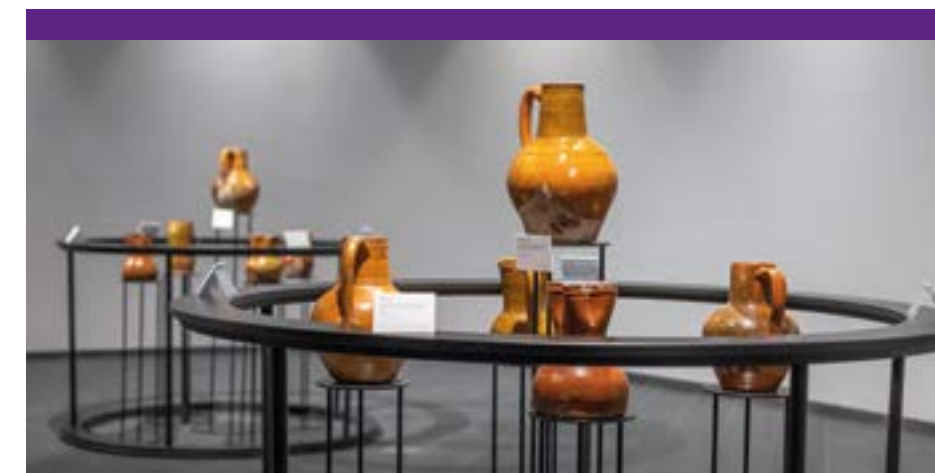
1 JUNGUITU ¿HABLAMOS DE VINO?

Avda. Portal de La Rioja, 2 (Brías)
Telf. 941 303 486
www.junguitu.com

2 SELECCIÓN VINOS ISABEL GUTIÉRREZ ORTIZ

Plaza de la Paz, 5 (Haro)
Telf. 941 303 017

WINE CELLARS



MUSEUMS

1 MUSEO VIVANCO DE LA CULTURA DEL VINO

Ctra. Nacional, 232 (Briones)
Telf. 941 322 323
www.vivancoculturadevino.es

2 MUSEO DE CERÁMICA - BODEGAS FYA

Ctra. de Navarrete a Entrena LR-137 Km1'5 (Navarrete)
Telf. 941 560 560
www.bodegasfya.com

LODGINGS

1 HOTEL RESTAURANTE VILLA DE ÁBALOS

Plaza Fermín Gurbindo, 2 (Ábalos)
Telf. 941 334 302 / 649 841 746
www.hotelvilladeabalos.com

2 HOTEL CONDE DE BADARÁN

Ctra. San Millán, 1 (Badarán)
Telf. 941 367 055
www.condedebadaran.com

3 CASA RURAL MEDIEVAL TORRE FUERTE SIGLO XIII

C/ Mayor, 8 (Baños de Rioja)
Telf. 941 300 193
www.torrefuerterural.com

4 CASA RURAL LEGARDA

C/ Real, 17 (Briñas)
Telf. 653 874 394 / 683 244 817
www.casadelegarda.com

5 HOSPEDERÍA SEÑORÍO DE BRIÑAS

C/ Señorío de Briñas, 5 (Briñas)
Telf. 941 304 224
www.hotelesconencantodelarioja.com

6 HOTEL PORTAL DE LA RIOJA

Avda. Portal de La Rioja, 2 (Briñas)
Telf. 941 311 480
www.portaldelarioja.com

7 CASA RURAL EL MESÓN

Travesía de la Estación, 3 (Briones)
Telf. 941 322 178 / 670 300 248
www.elmesonbriones.es

8 HOTEL LOS CALAOS DE BRIONES

C/ San Juan, 13 (Briones)
Telf. 941 322 131
www.loscalaosdebriones.com

9 HOTEL SANTA MARÍA DE BRIONES

C/ Concepción, 37 (Briones)
Telf. 941 991 599
www.santamariabriones.com

10 HOSPEDERÍA SEÑORÍO DE CASALARREINA

Plaza Santo Domingo Guzmán, 6 (Casalarreina)
Telf. 941 324 730
www.alojamientosconencantodelarioja.com

11 HOTEL ENTRERAILES

C/ Escuelas, 5 (Casalarreina)
Telf. 941 139 357
www.enterrailles.es

12 HOTEL VALLE DEL OJA

Avenida de La Rioja, 170 (Casalarreina)
Telf. 671 690 830
www.hotelvalledeloja.com

13 NATURA RESORTS

Carretera LR-11Km 36. (Casalarreina)
Telf. 941 565 000
www.natura-resorts.com

14 APTOS. TURÍSTICOS RIOJA VALLEY

C/Majadilla Alta, 1 (Cenicero)
Telf. 661 290 063
www.riojavalley.es

15 APTOS. RIVERA DEL TIRÓN

C/ Las Cuevas-Urbanización Los Lagares, 50
(Cuzcurrita de Río Tirón)
Telf. 616 494 945
www.riveradeltiron.com

16 CASA RURAL LA VIÑA

C/ Carnicerías, 15 (Cuzcurrita de Río Tirón)
Telf. 662 493 391 / 606 400 053
www.casarural-lavina.com

17 TEATRISO HOTEL PALACIO

C/ Segundo Cantón, 15
(Cuzcurrita de Río Tirón)
Telf. 941 327 453 / 697 922 452
www.teatrisso.com

18 APTOS. TURÍSTICOS BEETHOVEN

Plaza de la Iglesia, 9 (Haro)
Telf. 652 112 641
www.beethovenharo.com

19 HOTEL ARROPE

C/ Virgen de la Vega, 31 (Haro)
Telf. 941 304 025
www.hotelarrope.com

20 HOTEL PLAZA DE LA PAZ

Plaza de la Paz, 2 (Haro)
Telf. 941 266 545
www.hotelplazadelapaz.com

21 H. EUROSTARS LOS AGUSTINOS 4*

C/ San Agustín, 2 (Haro)
Telf. 941 311 308
www.eurostarslosagustinos.com

22 PURA CEPA URBAN SUITES

C/ Esteban de Ágreda, 3 (Haro)
Telf. 680 580 936
www.puracepasuites.com

23 TINTO DREAMS HOSTEL

C/ Ventilla, 30 1º (Haro)
Telf. 605 438 091
www.tintodreamshostel.com

24 WINE & SOUL SUITES

C/ Virgen de la Vega, 2 (Haro)
Telf. 689 487 986
www.wineandsoulsuites.com

25 BODEGA HOTEL FyA

Ctra. de Navarrete a Entrena LR-137 Km1'5
(Navarrete)
Telf. 941 560 560
www.bodegasfya.com

26 POSADA IGNATIUS

Plaza del Arco, 4 (Navarrete)
Telf. 941 124 094
www.posadaignatius.com

27 CASA RURAL EL MIRADOR DE ELOÍSA

C/ Carramolino, 10 (Rodezno)
Telf. 699 302 760
www.elmiradordeeloisa.es

28 HOTEL POSADA DE SAJAZARRA

C/ Duro, 3 (Sajazarra)
Telf. 626 083 596
www.posadadesajazarra.com

29 HOTEL RURAL MAR DE VIÑAS

Camino Valpierre, 1 (San Asensio)
Telf. 640 370 733
www.hotelruralmardevinas.com

30 HOTEL LA CAPELLANÍA

C/ Cofradía de la Santa Veracruz, 14
(San Asensio)
Telf. 941 457 660
www.hotelcapellania.com

31 HOTEL CASONA DEL BOTICARIO

C/ Avda. de La Rioja, 1
(San Vicente de la Sonsierra)
Telf. 941 334 200
www.casonadelboticario.com

32 CASA RURAL LA ALAMEDA RIOJANA

C/ Mayor, 15 (Uruñuela)
Telf. 616 164 551
www.alamedariojana.com

33 CASA RURAL BOUTIQUE PALACIO CONDES DE CIRAC

C/ Carramonte, 19 B (Villalba de Rioja)
Telf. 632 675 145
www.palaciocondesdecirac.es

WI- NE- RIES

- 1 BODEGAS ABEICA**
Camino San Roque, 6 (Ábalos)
Telf. 941 308 009
www.bodegasabeica.com
- 2 BODEGAS ÓBALO**
Ctra. N-232 a, km. 26 (Ábalos)
Telf. 941 744 056 / 629 936 554
www.bodegaobalo.com
- 3 BODEGAS PUELLES**
Camino de los Molinos, s/n (Ábalos)
Telf. 941 334 415
www.bodegaspuelles.com
- 4 BODEGAS SOLANA DE RAMÍREZ RUIZ**
C/ Arana, 24 (Ábalos)
Telf. 941 308 049
www.valsarte.com

- 5 BODEGAS Y VIÑEDOS SOLÁBAL**
Trav. Camino San Bartolomé, 6 (Ábalos)
Telf. 941 334 492
www.solabal.es
- 6 BODEGAS DAVID MORENO**
Ctra. a Villar de Torre, s/n (Badarán)
Telf. 941 367 338
www.davidmoreno.es
- 7 BODEGAS MARTÍNEZ ALESANCO**
C/ José García, 20 (Badarán)
Telf. 941 367 075
www.bodegasmartínezalesanco.com
- 8 BODEGAS JUAN CARLOS SANCHA**
Finca Fuentelacazuela
Camino de las Barreras s/n
(Baños del Río Tobía)
Telf. 941 232 160 / 639 216 011
www.juancarlosancha.com

- 9 BODEGAS TOBELOS**
Ctra. N 124, km. 45 (Briñas)
Telf. 941 305 630
www.tobelos.com
- 10 BODEGA LA CUEVA DEL AMERICANO**
C/ Acera del Medio, 5 (Briones)
Telf. 661 618 358 / 661 618 359
www.enbrionlacuevadelaamericano.com

- 11 BODEGAS BETOLAZA**
C/ Cuesta Dulce, 12 (Briones)
Telf. 663 473 444 / 650 862 104
www.betolaza.es

- 12 BODEGAS VIVANCO**
Crta. Nacional 232 (Briones)
Telf. 941 322 323
www.vivancoculturadevino.es

- 13 BODEGAS RUIZ ALFAYA: RUAL WINES**
C. de la Carretera, 10 (Castilseco)
Telf. 646 466 940
www.rualwines.com

- 14 BODEGAS MARQUÉS DE CÁCERES**
Avenida de Fuenmayor, 11 (Cenicero)
Telf. 941 454 744 / 626 653 782
www.marquesdecaceres.com

- 15 BODEGAS RIOJANAS**
Avda. Don Ricardo Ruiz de Azcárraga, 1
(Cenicero)
Telf. 941 454 050
www.bodegasriojanas.com

- 16 BODEGAS Y VIÑEDOS TRITIUM**
Avda. de la Libertad, 9 (Cenicero)
Telf. 629 152 822
www.tritium.es

- 17 BODEGAS BOHEDAL**
Ctra. Pancorbo. Camino de los Lirios, s/n
(Cuzcurrita de Río Tirón)
Telf. 941 328 064 / 681 099 899
www.bohedal.com

- 18 BODEGA CASTILLO DE CUZCURRITA**
C/ San Sebastián, 1
(Cuzcurrita de Río Tirón)
Telf. 941 328 022
www.castillodecuzcurrita.com

- 19 BODEGAS TOBÍA**
Paraje Senda Rutia, s/n
(Cuzcurrita de Río Tirón)
Telf. 941 301 789
www.bodegastobia.com

- 20 BODEGAS ALTANZA**
Ctra. Nacional 232 Km. 491,5
(Fuenmayor)
Telf. 941 450 860
www.altanza.com

- 21 FINCA VALPIEDRA**
Termino Montecillo, s/n (Fuenmayor)
Telf. 941 450 876
www.familiamartinezbujanda.com

- 22 BODEGAS COR DE MEI**
C/ Zamudio, 2 (Gimileo)
Telf. 657 273 479
www.cordemei.com

- 23 BODEGAS SANTALBA**
Avda. de La Rioja, s/n (Ctra. N-232,
Km 445) (Gimileo)
Telf. 941 304 231
www.santalba.com

- 24 BODEGAS BILBAINAS VIÑA POMAL**
C/ Estación, 3 (Haro)
Telf. 941 310 147 / 683 676 579
www.15bodegas.com/bodegas-bilbainas

- 25 BODEGAS CVNE**
Avda Costa del Vino, 21 (Haro)
Telf. 941 304 809
www.cvne.com

- 26 BODEGAS GÓMEZ CRUZADO**
Avda. Vizcaya, 6 (Haro)
Telf. 941 312 502
www.gomezacruzado.com

- 27 BODEGAS LA RIOJA ALTA**
Avda. Vizcaya, 8 (Haro)
Telf. 941 310 346
www.riojalta.com

- 28 BODEGAS MANZANOS HARO**
C/Prim 11 bajo, Haro
Telf. 941 618 761
www.bodegasmanzanos.com

- 29 BODEGAS MARTÍNEZ LACUESTA**
Paraje de Ubieta, s/n (Haro)
Telf. 941 310 050
www.martinezlacuesta.com

- 30 BODEGAS MUGA**
Barrio de la Estación, s/n (Haro)
Telf. 941 306 060
www.bodegasmuga.com

- 31 BODEGAS RAMÓN BILBAO**
Avda. Sto Domingo, 34 (Haro)
Telf. 941 310 316
www.bodegasramonbilbao.es

- 32 BODEGAS RODA**
Avda. Vizcaya, 5. Barrio de la Estación
(Haro)
Telf. 941 303 001
www.roda.es

- 33 BODEGAS AYAGAR**
Camino Valpierre, s/n (Hormilleja)
Telf. 609 758 182 / 660 693 330
www.bodegasayagar.es

- 34 BODEGA ARIZCUREN**
C/ Santa Isabel, 10-12 (Logroño)
Telf. 696 880 937
www.arizcurenvinos.com

- 35 BODEGAS CAMPO VIEJO**
Camino de Lapuebla de Labarca, 50
(Logroño)
Telf. 941 279 900
www.campoviejo.com

- 36 BODEGAS MARQUÉS DE VARGAS**
Ctra. de Zaragoza. Km. 6 (Logroño)
Telf. 941 261 401
www.marquesdevargas.com

- 37 HOPLITA HISTORIC WINES**
C/ Herrerías 21, bajos 4-5 (Logroño)
Telf. 609 922 024
www.hoplitawines.com

- 38 VIÑA IJALBA**
Ctra. Pamplona. Km. 1 (Logroño)
Telf. 941 261 100 / 618 492 098
www.ijalba.com

- 39 BODEGAS CORRAL**
Ctra. de Logroño. Km.10 (Navarrete)
Telf. 941 440 193
www.bodegascorral.com

- 40 BODEGA FyA**
Ctra. de Navarrete a Entrena LR-137
Km1'5 (Navarrete)
Telf. 941 560 560
www.bodegasfy.com

- 41 BODEGAS MONTECILLO**
Ctra. de Fuenmayor. Km. 3. Polígono
Lentiscares. (Navarrete)
Telf. 941 100 306
www.bodegasmontecillo.com

- 42 BODEGAS BERONIA**
Ctra. Ollauri-Nájera. Km.1,8 (Ollauri)
Telf. 941 338 000 / 653 910 390
www.beronia.es

- 43 BODEGAS VALENCISO**
Ctra. Ollauri-Nájera. Km. 0,4 (Ollauri)
Telf. 941 304 724
www.valenciso.com

- 44 BODEGA EL ARCA DE NOÉ**
C/ Victor Cardenal, 71 (San Asensio)
Telf. 941 457 231
www.bodegaelarcadenoe.com

- 45 BODEGA SAN CEBRÍN**
Ctra. Circunvalación, s/n (San Asensio)
Telf. 941 457 640
www.sancebrin.com

- 46 BODEGAS ALFONSO GARCÍA HERNANDO**
C/ Victor Cardenal, 64 (San Asensio)
Telf. 941 457 257 / 607 990 895
www.bodegasalfonsogarciahernando.es

- 47 BODEGAS LECEA**
Las Cuevas, 246. Barrio de las Bodega
(San Asensio)
Telf. 685 010 400
www.bodegaslecea.com

- 48 BODEGAS PERICA**
Avda. de La Rioja, 59 (San Asensio)
Telf. 941 457 152
www.bodegasperica.com

- 49 BODEGAS SEÑORÍO DE LA ESTRELLA**
Ctra. N-232, s/n (San Asensio)
Telf. 941 457 133
www.senoriodelaestrella.es

- 50 BODEGA HACIENDA LÓPEZ DE HARO**
Camino del Cementerio, s/n
(San Vicente de la Sonsierra)
Telf. 676 393 955
www.haciendalopezdeharo.com

- 51 BODEGAS RAMÍREZ DE LA PISCINA**
Ctra. Logroño-Vitoria, s/n
(San Vicente de la Sonsierra)
Telf. 941 334 505 / 616 917 943
www.ramirezdelapiscina.com

- 52 BODEGAS SONSIERRA COOP.**
C/ Paseo Logroño, 3
(San Vicente de la Sonsierra)
Telf. 941334031
www.sonsierra.com

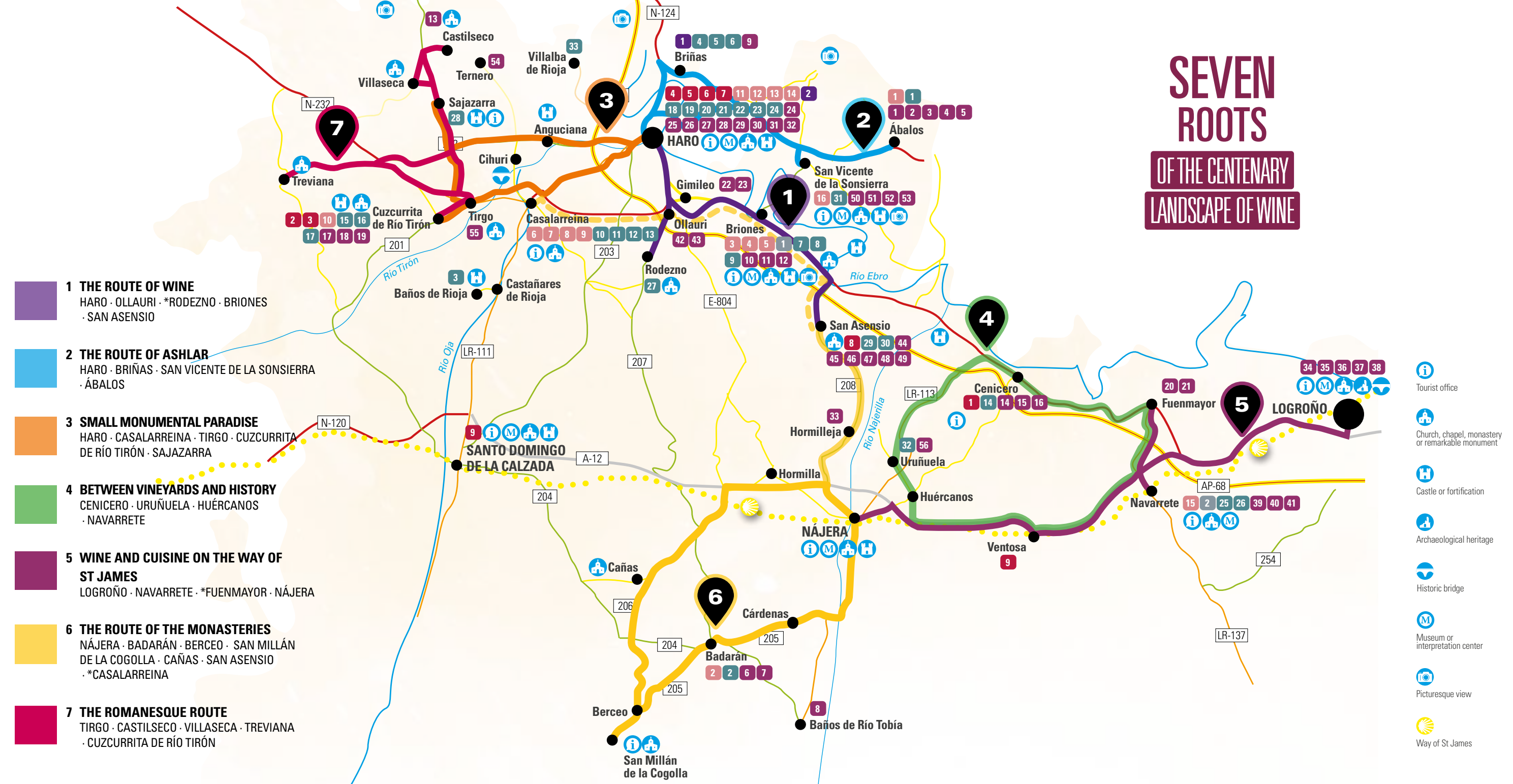
- 53 BODEGAS Y VIÑEDOS CARLOS MORO**
Camino Garugele, s/n
(San Vicente de la Sonsierra)
Telf. 941 334 093 / 674 353 715
www.bodegacarlosmoro.com

- 54 HACIENDA EL TERNERO**
Finca El Ternero (Ternero)
Telf. 941 320 021
www.elternero.com

- 55 BODEGAS TARÓN**
Ctra. de Miranda, s/n (Tirgo)
Telf. 941 301 650
www.bodegastaron.com

- 56 BODEGAS ZINIO**
Ctra. Cenicero, s/n (Uruñuela)
Telf. 941 371 319
www.ziniobodegas.com

SEVEN ROOTS OF THE CENTENARY LANDSCAPE OF WINE



- 1 THE ROUTE OF WINE**
HARO · OLLAURI · *RODEZNO · BRIONES · SAN ASENSIO
- 2 THE ROUTE OF ASHLAR**
HARO · BRIÑAS · SAN VICENTE DE LA SONSIERRA · ÁBALOS
- 3 SMALL MONUMENTAL PARADISE**
HARO · CASALARREINA · TIRGO · CUZCURRITA DE RÍO TIRÓN · SAJAZARRA
- 4 BETWEEN VINEYARDS AND HISTORY**
CENICERO · URUÑUELA · HUÉRCANOS · NAVARRETE
- 5 WINE AND CUISINE ON THE WAY OF ST JAMES**
LOGROÑO · NAVARRETE · *FUENMAYOR · NÁJERA
- 6 THE ROUTE OF THE MONASTERIES**
NÁJERA · BADARÁN · BERCEO · SAN MILLÁN DE LA COGOLLA · CAÑAS · SAN ASENSIO · *CASALARREINA
- 7 THE ROMANESQUE ROUTE**
TIRGO · CASTILSECO · VILLASECA · TREVIANA · CUZCURRITA DE RÍO TIRÓN

- Tourist office
- Church, chapel, monastery or remarkable monument
- Castle or fortification
- Archaeological heritage
- Historic bridge
- Museum or interpretation center
- Picturesque view
- Way of St James

ESTABLISHMENTS OF THE RIOJA ALTA WINE ROUTE

EXPERIENCES	
Cenicero	1 Bodega Calado 1880
Cuzcurrita de Río Tiron	2 Globos Arcoiris
Haro	3 La Bodega del Tesoro
	4 Grape Aventura
	5 Lácteos Martínez - Queso Los Cameros
	6 Oja Sport
	7 Rioja Rent a Car
San Asensio	8 Rioja Wine Trips
Ventosa	9 Explotaciones Apícolas Campo Miel

RESTAURANTS	
Ábalos	1 Villa de Ábalos
Badarán	2 Conde de Badarán
Briones	3 Allegar
	4 Los Calaos de Briones
	5 Vivanco
Casalarreina	6 Entrerañles
	7 La Vieja Bodega
	8 Lumbre
	9 Otium Restaurante
Cuzcurrita de Río Tiron	10 Aker
Haro	11 Arrope
	12 Beethoven
	13 El Claustro de los Agustinos
	14 Nublo
Navarrete	15 El Figón del Duque
San Vicente de la Sonsierra	16 Casa Toni

WINE CELLARS	
Briñas	1 Junguito ¿Hablamos de Vino?
Haro	2 Selección Vinos Isabel Gutiérrez Ortiz

MUSEUMS	
Briones	1 Museo Vivanco de la Cultura del Vino
Navarrete	2 Museo Bodegas FYA

LODGINGS	
Ábalos	1 Hotel Restaurante Villa de Ábalos
Badarán	2 Hotel Conde de Badarán
Baños de Rioja	3 Casa Rural Medieval Torre Fuerte Siglo XIII
Briñas	4 Casa Rural Legarda
	5 Hospedería Señorío de Briñas
	6 Hotel Portal de La Rioja
Briones	7 Casa Rural El Mesón
	8 Hotel Los Calaos de Briones
	9 Hotel Santa María de Briones

WINERIES	
Ábalos	1 Bodegas Abeica
	2 Bodegas Óbalo
	3 Bodegas Puelles
	4 Bodegas Solana de Ramírez Ruiz
	5 Bodegas y Viñedos Solábal
Badarán	6 Bodegas David Moreno
	7 Bodegas Martínez Alesanco
Baños de Río Tobía	8 Bodegas Juan Carlos Sancha
Briñas	9 Bodegas Tobelos
Briones	10 Bodega La Cueva del Americano
	11 Bodegas Betolaza
	12 Bodegas Vivanco
Castilseco	13 Bodegas Ruiz Alfaya: Rual Wines
Cenicero	14 Bodegas Marqués de Cáceres
	15 Bodegas Riojanas
	16 Bodegas y Viñedos Tritium

Casalarreina	10 Hospedería Señorío de Casalarreina
	11 Hotel Entrerañles
	12 Hotel Valle del Oja
	13 Natura Resorts
Cenicero	14 Aptos. Turísticos Rioja Valley
Cuzcurrita de Río Tiron	15 Aptos. Rivera del Tiron
	16 Casa Rural La Viña
	17 Teatrissio Hotel Palacio
Haro	18 Aptos. Turísticos Beethoven
	19 Hotel Arrope
	20 Hotel Plaza de La Paz
	21 H. Eurostars Los Agustinos 4*
	22 Pura Cepa Urban Suites
	23 Tinto Dreams Hostel
	24 Wine & Soul Suites
Navarrete	25 Bodega Hotel FyA
	26 Posada Ignatius
Rodezno	27 Casa Rural El Mirador de Eloísa
Sajazarra	28 Hotel Posada de Sajazarra
San Asensio	29 Hotel Rural Mar De Viñas
	30 Hotel La Capellanía
San Vicente de la Sonsierra	31 Hotel Casona del Boticario
Uruñuela	32 Casa Rural la Alameda Riojana
Villalba de Rioja	33 Casa Rural Boutique Palacio Condes de Cirac

Cuzcurrita de Río Tiron	17 Bodegas Bohedal
	18 Bodega Castillo de Cuzcurrita
	19 Bodegas Tobía
Fuenmayor	20 Bodegas Altanza
	21 Finca Valpiedra
Gimileo	22 Bodegas Cor de Mei
	23 Bodegas Santalba
Haro	24 Bodegas Bilbainas Viña Pomal
	25 Bodegas CVNE
	26 Bodegas Gómez Cruzado
	27 Bodegas La Rioja Alta
	28 Bodegas Manzanos Haro
	29 Bodegas Martínez Lacuesta
	30 Bodegas Muga
	31 Bodegas Ramón Bilbao
	32 Bodegas Roda
Hormilleja	33 Bodegas Ayagar
Logroño	34 Bodega Arizcuren
	35 Bodegas Campo Viejo
	36 Bodegas Marqués de Vargas
	37 Hoplita Historic Wines
	38 Viña Ijalba
Navarrete	39 Bodegas Corral
	40 Bodegas FyA
	41 Bodegas Montecillo
Ollauri	42 Bodegas Beronia
	43 Bodegas Valenciso
San Asensio	44 Bodega El Arca de Noé
	45 Bodega San Cebrián
	46 Bodegas Alfonso García Hernando
	47 Bodegas Lecea
	48 Bodegas Perica
	49 Bodegas Señorío de la Estrella
San Vicente de la Sonsierra	50 Bodega Hacienda López de Haro
	51 Bodegas Ramírez de la Piscina
	52 Bodegas Sonsierra Coop.
	53 Bodegas y Viñedos Carlos Moro
Ternero	54 Hacienda El Ternero
Tirgo	55 Bodegas Tarón
Uruñuela	56 Bodegas Zinio

TOURIST OFFICES

LOGROÑO

Calle Portales, 50
Escuelas Trevijano
T. 941 29 12 60

HARO

Plaza de la Paz, 1
T. 941 30 35 80

BRIONES

Calle San Juan, 19
T. 608 03 68 56

NAVARRETE

Cuesta el Caño
T. 941 44 10 62

NÁJERA

Paseo San Julián, 4
T. 941 74 11 84

SAN VICENTE DE LA SONSIERRA

Plaza Mayor, 1. Ayuntamiento.
T. 941 33 40 06

CENICERO

Plaza de España, 12
T. 941 45 40 16

SAJAZARRA

Calle del Río, 4
T. 689 24 70 69

CASALARREINA

Plaza Sto. Domingo de Guzmán, 5
Monasterio de la Piedad
T. 619 09 82 23



Ruta del Vino
 Rioja Alta

 **La Rioja**
lariojaturismo.com

 **vinodespaña**



'GOURMAND Awards. World Cookbook Awards 2021'. Best Spanish publication, category 'World of Wine. Drink Tourism'

www.rutasdelvinorioja.com



DISTANCES

Barcelona: 478 Km
Bilbao: 136 Km
Burgos: 114 Km
Madrid: 326 Km
Pamplona: 86 Km
Vitoria: 63 Km
Zaragoza: 173 Km

